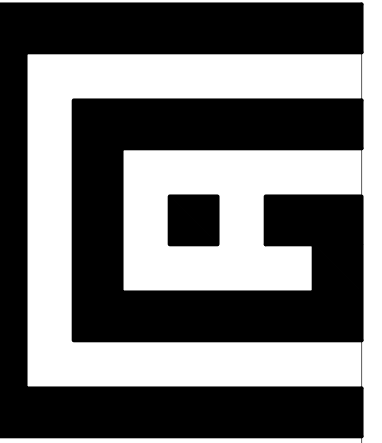


225 WBHW

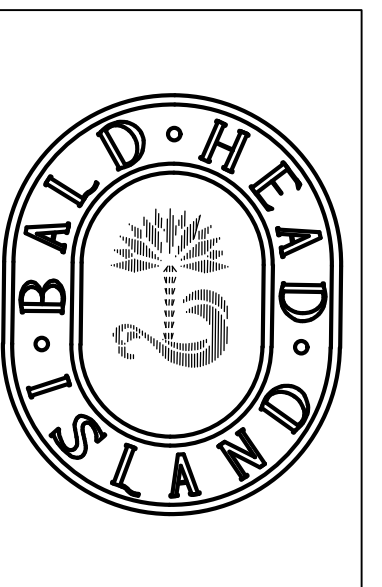
225 WEST BALD HEAD WYND
BALD HEAD ISLAND, NORTH CAROLINA 28461
BRUNSWICK COUNTY



STREET ELEVATION



**GLOVER
DESIGN**
residential design



ANY STRUCTURAL COMPONENTS ARE SHOWN FOR REFERENCE ONLY. CONTRACTOR TO INSTALL COMPONENTS TO MEET NC RESIDENTIAL BUILDING CODE.

MINOR REVISIONS
2 / 26 / 2024
REVISIONS
6 / 19 / 2023

THESE DRAWINGS ARE THE PROPERTY OF GLOVER DESIGN LLC. UNAUTHORIZED USE IS PROHIBITED. COPYRIGHT 2023

PROJECT TEAM:

DESIGNER:

GLOVER DESIGN llc
323 Wooded Acres Road
Lake Waccamaw, NC 28450
m 910.660-3606
e gloverdesignllc@gmail.com

CONTRACTOR:

HOMES BY PARRISH LLC
c/o CHRIS PARRISH
4500 Parrish Manor Drive
Garner, NC 27529
m 919.661.1234
e chris@parrishmanor.com

PROJECT DATA:

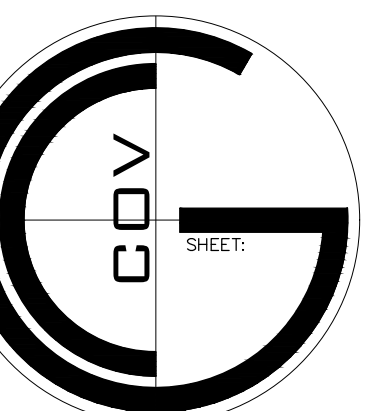
PROJECT NAME: 225 WBHW
PROJECT DESCRIPTION: SINGLE FAMILY RESIDENCE
PROJECT ADDRESS: 225 WEST BALD HEAD WYND
OWNER CONTACT: CHRIS PARRISH

INDEX OF DRAWINGS:

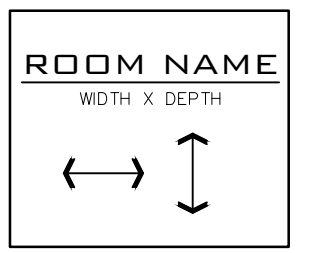
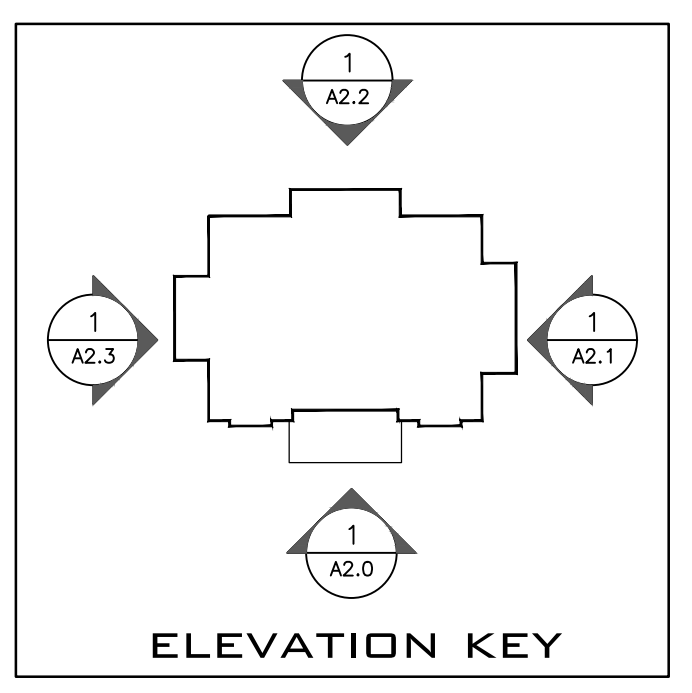
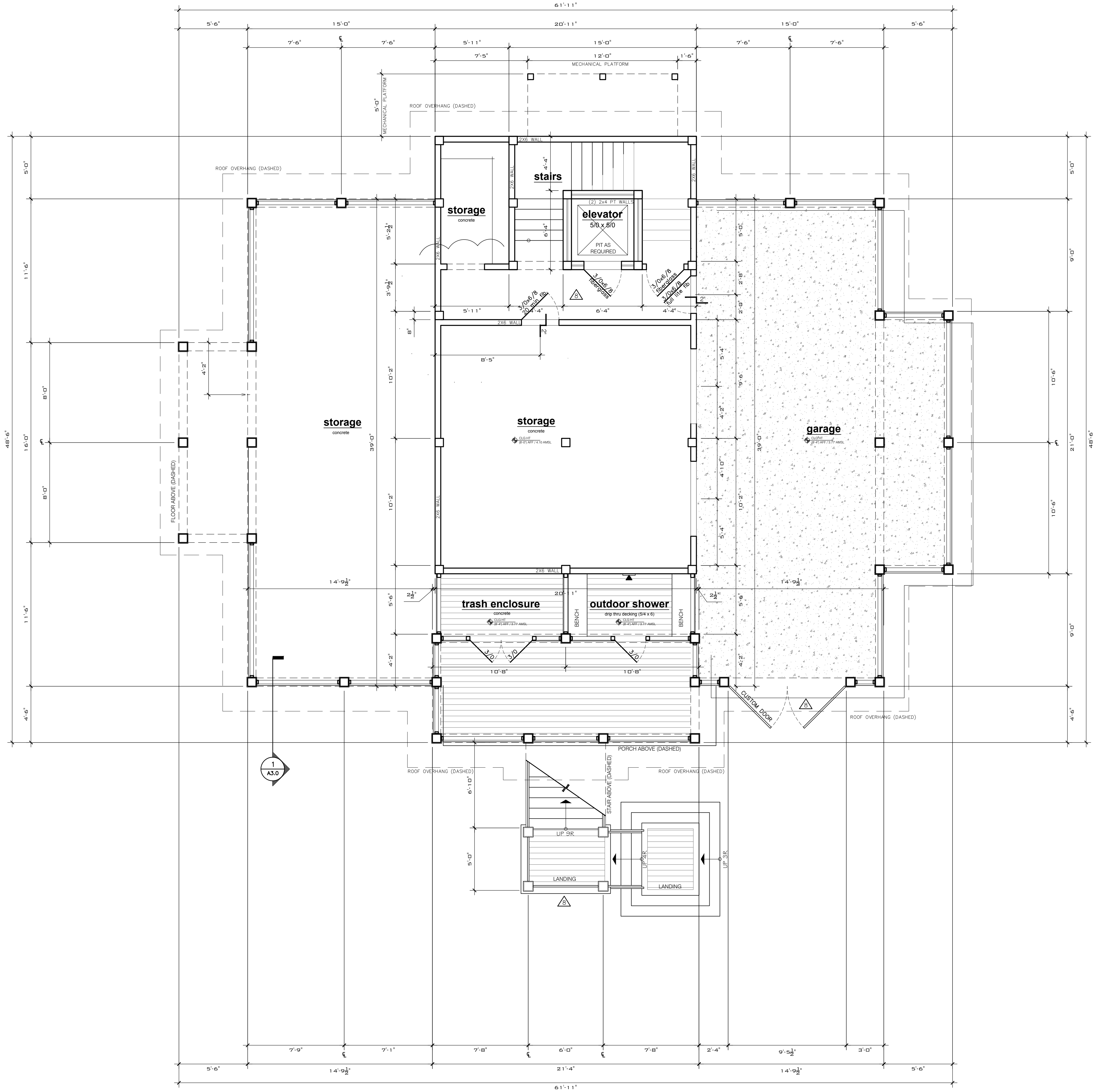
COV COVER
C1 SITE PLAN
C2 SURVEY (ESP Associates Inc.)
L1 LANDSCAPE PLAN
A1.0 PLAN : GROUND FLOOR
A1.1 PLAN : FIRST FLOOR
A1.2 PLAN : SECOND FLOOR
A1.3 PLAN : ELECTRICAL
A2.0 ELEVATION
A2.1 ELEVATION
A2.2 ELEVATION
A2.3 ELEVATION
A3.0 SECTIONS / DETAILS / ROOF PLAN

COVERED FLOOR		225 WBHW SF CALCULATIONS	
GROUND FLOOR (heated)	= 290 SF	GROUND FLOOR (heated)	= 290 SF
STORAGE (ground floor)	= 1045 SF	STORAGE (ground floor)	= 1045 SF
PARKING/GARAGE (ground floor)	= 740 SF	PARKING/GARAGE (ground floor)	= 740 SF
TRASH ENCLOSURE (ground floor)	= 60 SF	TRASH ENCLOSURE (ground floor)	= 60 SF
OUTDOOR SHOWER (ground floor)	= 60 SF	OUTDOOR SHOWER (ground floor)	= 60 SF
FIRST FLOOR (heated)	= 2150 SF	FIRST FLOOR (heated)	= 2150 SF
FRONT PORCH (first floor)	= 166 SF	FRONT PORCH (first floor)	= 166 SF
HVAC PLATFORM	= 50 SF	HVAC PLATFORM	= 50 SF
SECOND FLOOR (heated)	= 922 SF	SECOND FLOOR (heated)	= 922 SF
COVERED PORCH (second floor)	= 150 SF	COVERED PORCH (second floor)	= 150 SF
UNCOVERED PORCH (second floor)	= 75 SF	UNCOVERED PORCH (second floor)	= 75 SF
GRILLING DECK (second floor)	= 70 SF	GRILLING DECK (second floor)	= 70 SF
TOTAL HEATED SF	= 3362 SF	TOTAL HEATED SF	= 3362 SF

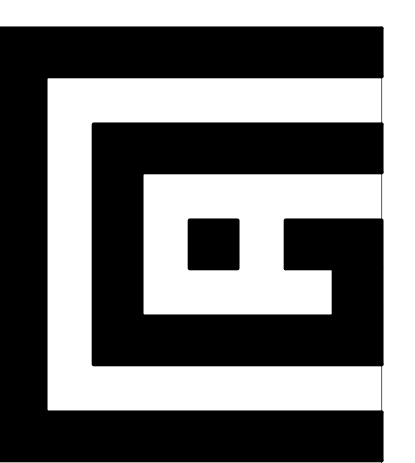
PROJECT: 225 WBHW
225 WEST BALD HEAD WYND
BALD HEAD ISLAND . NC . 28461
SHEET TITLE: COVER
DATE: 19 JUNE 2023
DRAWN BY: KCG
PROJECT NO.



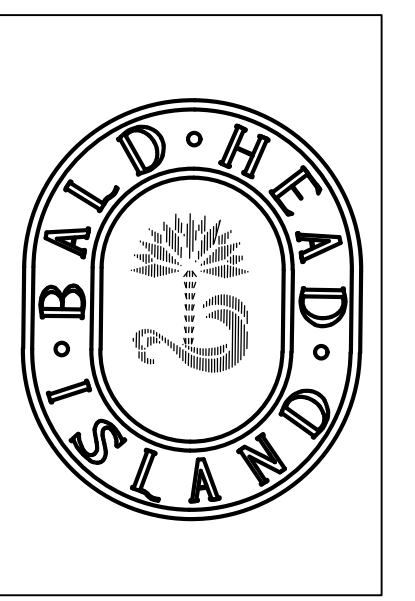
- GENERAL NOTES**
- DIMENSIONS TO WALLS ARE TO FACE OF STUD.
 - CONSULT DESIGNER IF VARIATIONS IN DIMENSIONS OCCUR.
 - UNLESS NOTED OTHERWISE, ALL EXTERIOR FRAME WALLS TO BE 2 X 6 WOOD STUD FRAMING @16" O.C. WITH 1/2" CDX OR EQUAL ON EXTERIOR AND 1/2" GYP. BD. ON INTERIOR. FILL CAVITY INSULATION
 - UNLESS NOTED OTHERWISE, ALL INTERIOR FRAME WALLS TO BE 2 X 6 WOOD STUD FRAMING @16" O.C. 1/2" GYP. BD. ON BOTH SIDES.



- WINDOW KEY**
- A = AWNING
 - P = PICTURE
 - C = CASEMENT
 - DH = DOUBLE HUNG
 - SH = SINGLE HUNG
 - TR = TRANSOM
 - T = TEMPERED



GLOVER DESIGN
residential design

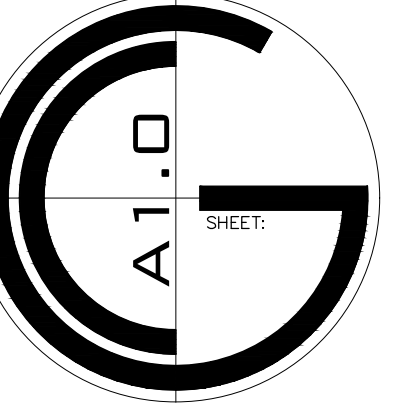


ANY STRUCTURAL COMPONENTS ARE SHOWN FOR REFERENCE ONLY. CONTRACTOR TO INSTALL COMPONENTS TO MEET NC RESIDENTIAL BUILDING CODE.

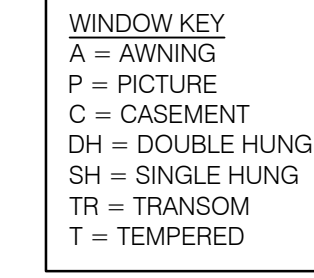
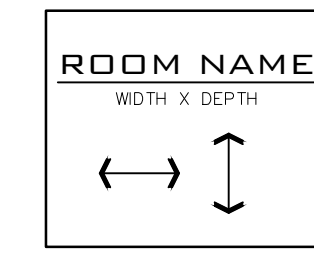
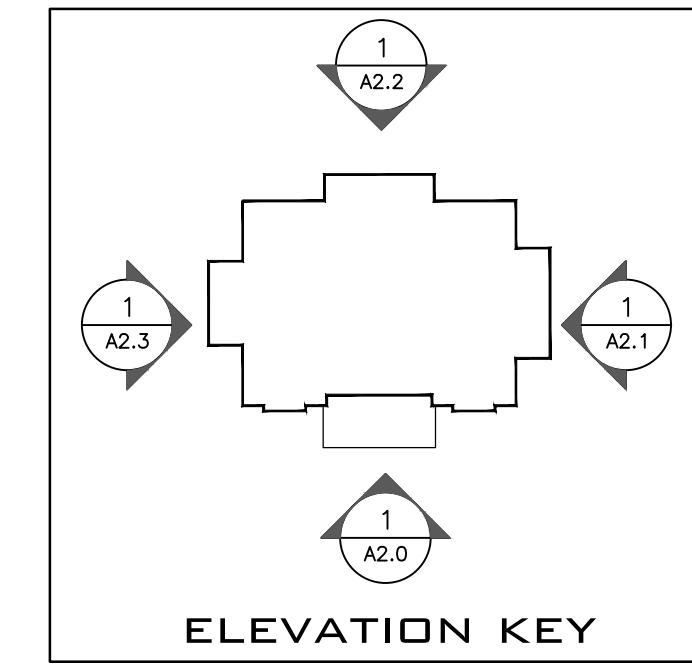
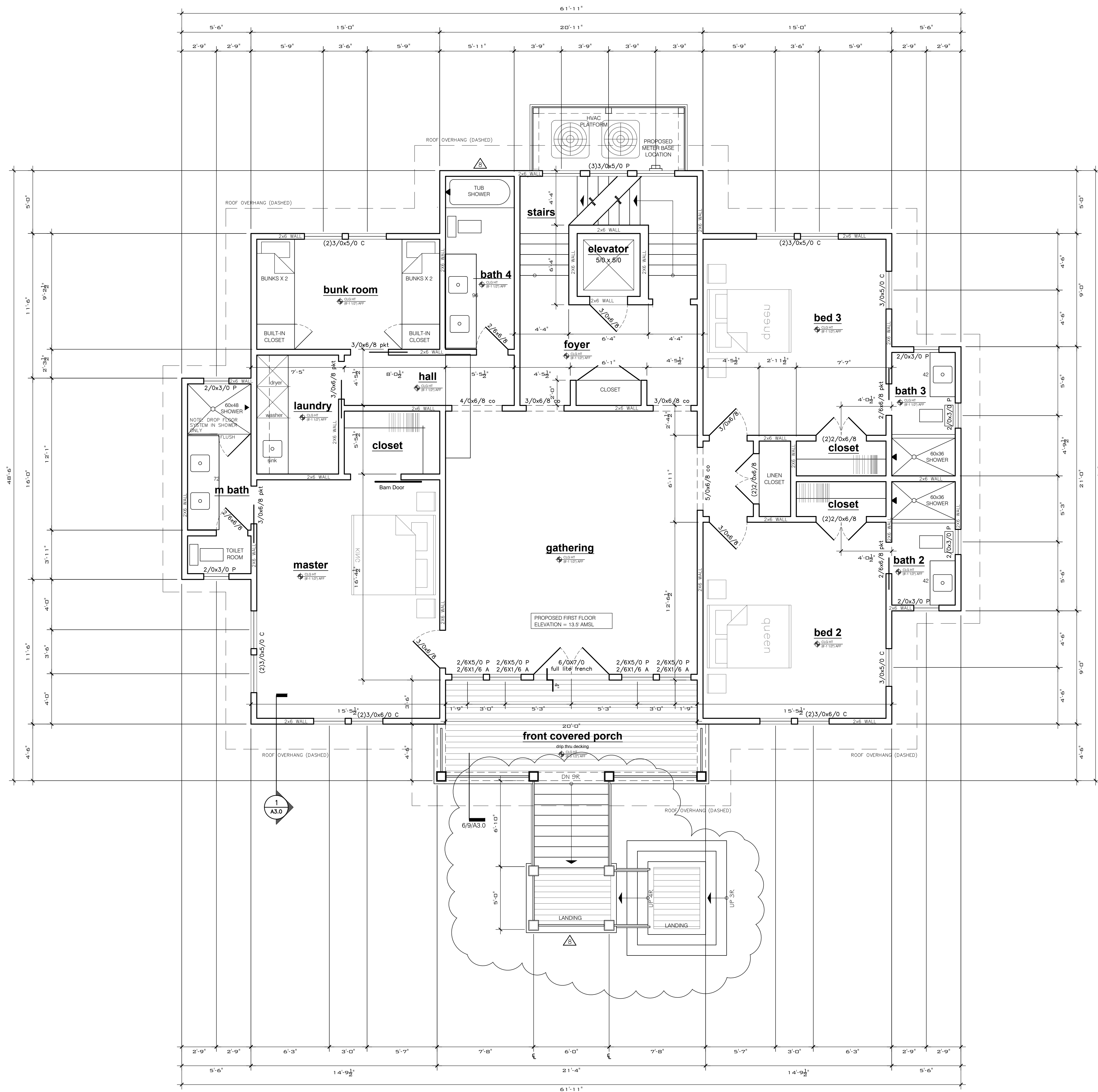
- MINOR REVISIONS
2 / 26 / 2024
- REVISIONS
6 / 19 / 2023

THESE DRAWINGS ARE THE PROPERTY OF GLOVER DESIGN, LLC. UNAUTHORIZED USE IS PROHIBITED. COPYRIGHT 2023

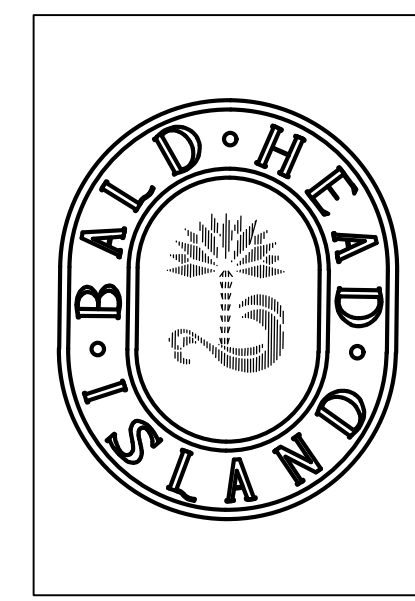
PROJECT:	225 WBHW
SHEET TITLE:	PLAN : GROUND FLOOR
DATE:	19 JUNE 2023
DESIGNED BY:	KCG
PROJECT NO.:	



1/A1.0 PLAN : ground floor
1/4" = 1'-0"



- GENERAL NOTES**
- DIMENSIONS TO WALLS ARE TO FACE OF STUD.
 - CONSULT DESIGNER IF VARIATIONS IN DIMENSIONS OCCUR.
 - UNLESS NOTED OTHERWISE, ALL EXTERIOR FRAME WALLS TO BE 2 X 6 WOOD STUD FRAMING @16" O.C. WITH 1/2" CDX OR EQUAL ON EXTERIOR AND 1/2" GYP. BD. ON INTERIOR. FILL CAVITY INSULATION
 - UNLESS NOTED OTHERWISE, ALL INTERIOR FRAME WALLS TO BE 2 X 6 WOOD STUD FRAMING @16" O.C. 1/2" GYP. BD. ON BOTH SIDES.



ANY STRUCTURAL COMPONENTS ARE SHOWN FOR REFERENCE ONLY. CONTRACTOR TO INSTALL COMPONENTS TO MEET NC RESIDENTIAL BUILDING CODE.

MINOR REVISIONS
2 / 26 / 2024

REVISIONS
6 / 19 / 2023

THESE DRAWINGS ARE THE PROPERTY OF GLOVER DESIGN LLC. UNAUTHORIZED USE IS PROHIBITED. COPYRIGHT 2023

PROJECT: 225 WBHW
225 WEST BALD HEAD WYND
BALD HEAD ISLAND . NC . 28461

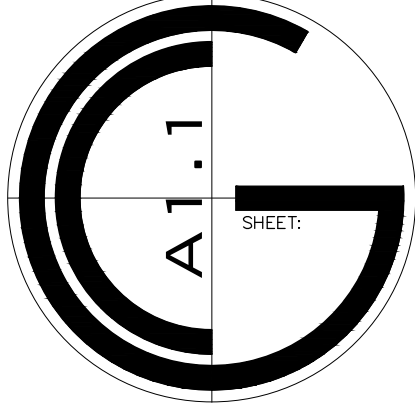
SHEET TITLE: PLAN : FIRST FLOOR

DATE: 19 JUNE 2023

PROJECT NO.

DATE: 19 JUNE 2023

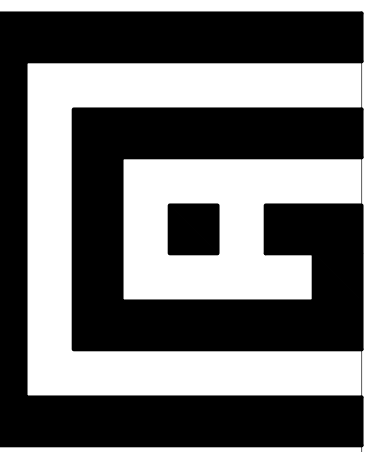
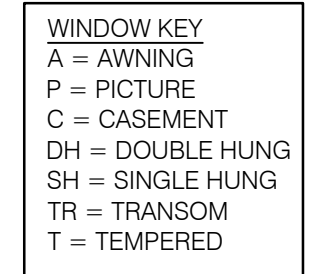
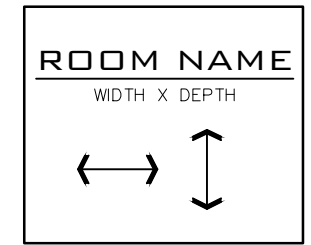
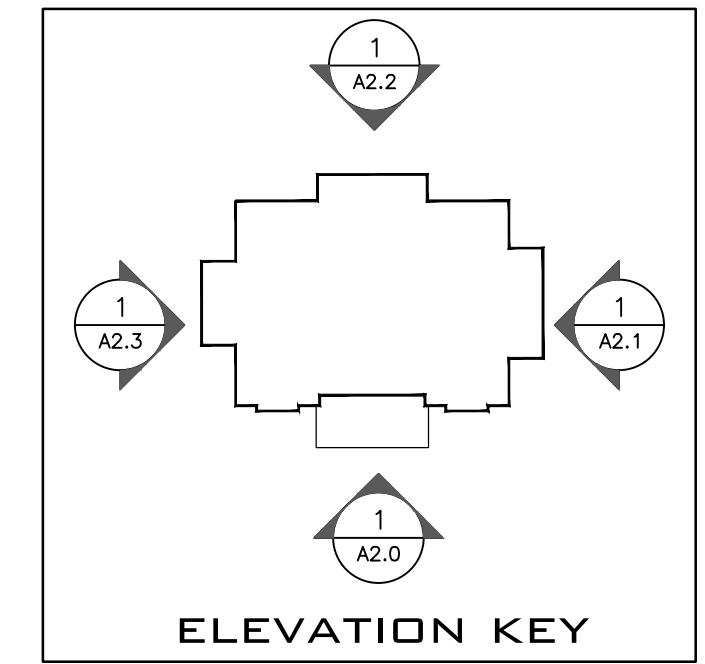
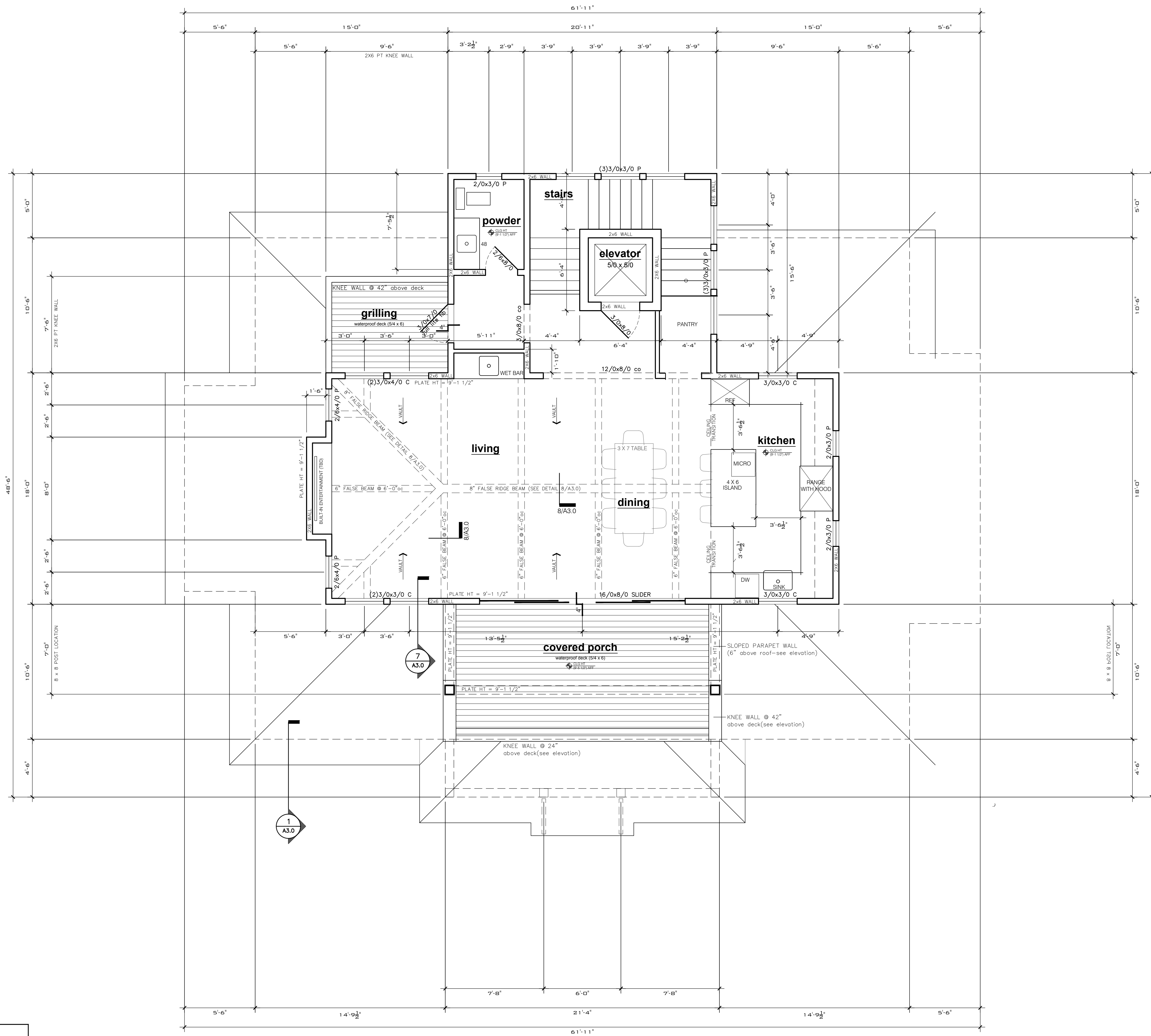
DATE: 19 JUNE 2023



1/A1.1 PLAN : first floor
1/4" = 1'-0"

GENERAL NOTES

- 1 • DIMENSIONS TO WALLS ARE TO FACE OF STUD.
- 2 • CONSULT DESIGNER IF VARIATIONS IN DIMENSIONS OCCUR.
- 3 • UNLESS NOTED OTHERWISE, ALL EXTERIOR FRAME WALLS TO BE 2 X 6 WOOD STUD FRAMING @16" O.C. WITH 1/2" CDX OR EQUAL ON EXTERIOR AND 1/2" GYP. BD. ON INTERIOR. FILL CAVITY INSULATION
- 4 • UNLESS NOTED OTHERWISE, ALL INTERIOR FRAME WALLS TO BE 2 X 6 WOOD STUD FRAMING @16" O.C. 1/2" GYP. BD. ON BOTH SIDES.



GLOVER DESIGN
residential design

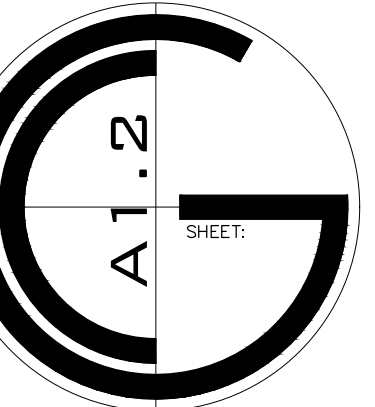


ANY STRUCTURAL COMPONENTS ARE SHOWN FOR REFERENCE ONLY. CONTRACTOR TO INSTALL COMPONENTS TO MEET NC RESIDENTIAL BUILDING CODE.

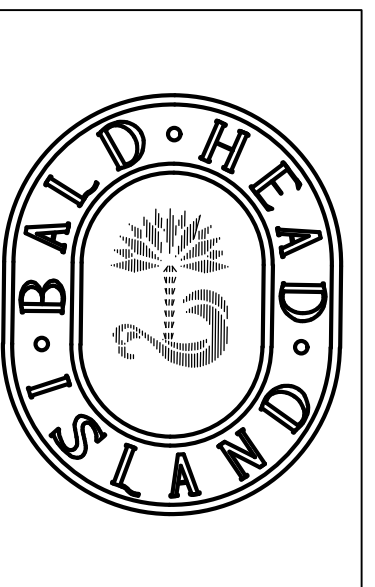
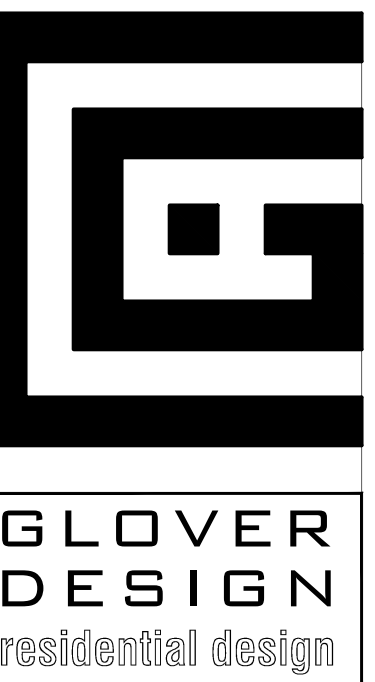
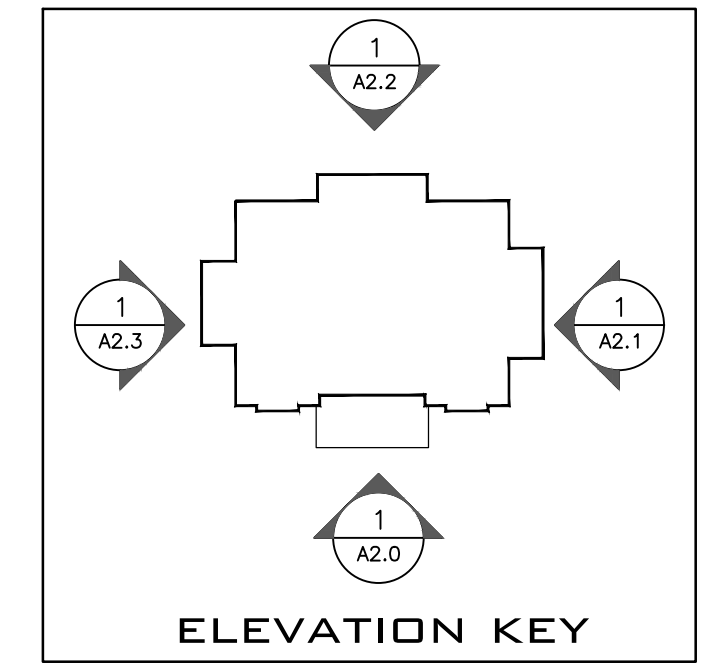
MINOR REVISIONS
2 / 26 / 2024
REVISIONS
6 / 19 / 2023

THESE DRAWINGS ARE THE PROPERTY OF GLOVER DESIGN, LLC. UNAUTHORIZED USE IS PROHIBITED. COPYRIGHT 2023

PROJECT: **225 WBHW**
225 WEST BALD HEAD WYND
BALD HEAD ISLAND . NC . 28461
SHEET TITLE: **PLAN : SECOND FLOOR**
DRAWN BY: **KCG** PROJECT NO. _____
DATE: **19 JUNE 2023**



1/A1.2 PLAN : second floor
1/4" = 1'-0"



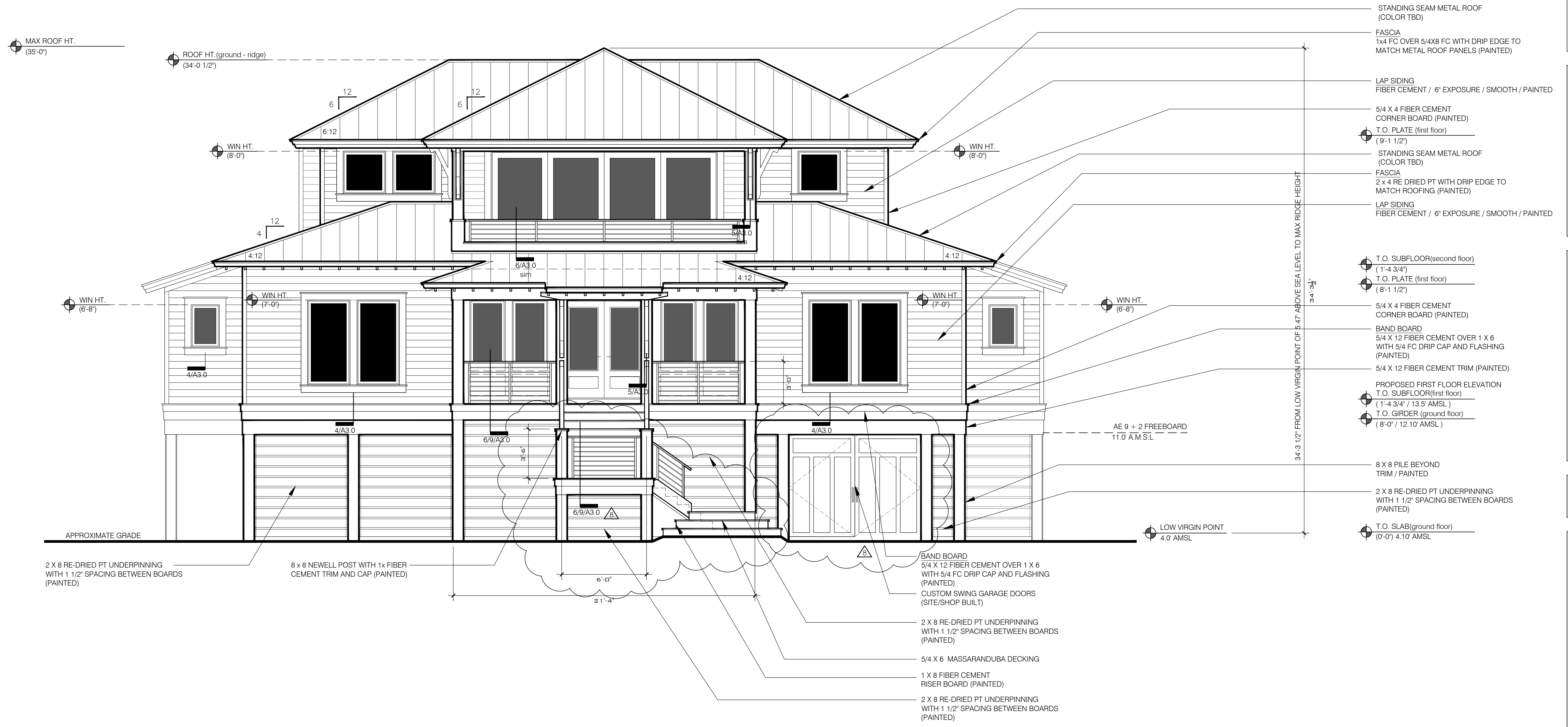
ANY STRUCTURAL COMPONENTS ARE SHOWN FOR REFERENCE ONLY. CONTRACTOR TO INSTALL COMPONENTS TO MEET NC RESIDENTIAL BUILDING CODE.

MINOR REVISIONS
2 / 26 / 2024

REVISIONS
6 / 19 / 2023

THESE DRAWINGS ARE THE PROPERTY OF GLOVER DESIGN LLC. UNAUTHORIZED USE IS PROHIBITED. COPYRIGHT 2023

PROJECT	225 WBHW
225 WEST BALD HEAD WYND	
BALD HEAD ISLAND . NC . 28461	
SHEET TITLE	ELEVATION : FRONT
DRAWN BY	KCG
DATE	19 JUNE 2023
PROJECT NO.	



- STANDING SEAM METAL ROOF (COLOR TBD)
- FASCIA 1x4 FC OVER 5/4X8 FC WITH DRIP EDGE TO MATCH METAL ROOF PANELS (PAINTED)
- LAP SIDING FIBER CEMENT / 6' EXPOSURE / SMOOTH / PAINTED
- 5/4 X 4 FIBER CEMENT CORNER BOARD (PAINTED)
- T.O. PLATE (first floor) (9'-1 1/2')
- STANDING SEAM METAL ROOF (COLOR TBD)
- FASCIA 2 x 4 RE DRIED PT WITH DRIP EDGE TO MATCH ROOFING (PAINTED)
- LAP SIDING FIBER CEMENT / 6' EXPOSURE / SMOOTH / PAINTED
- T.O. SUBFLOOR(second floor) (1'-4 3/4')
- T.O. PLATE (first floor) (8'-1 1/2')
- 5/4 X 4 FIBER CEMENT CORNER BOARD (PAINTED)
- BAND BOARD 5/4 X 12 FIBER CEMENT OVER 1 X 6 WITH 5/4 FC DRIP CAP AND FLASHING (PAINTED)
- 5/4 X 12 FIBER CEMENT TRIM (PAINTED)
- PROPOSED FIRST FLOOR ELEVATION T.O. SUBFLOOR(first floor) (1'-4 3/4' / 13.5' AMSL)
- T.O. GIRDER (ground floor) (8'-0' / 12.10' AMSL)
- AE 9 + 2 FREEBOARD 11'0' AMSL
- 8 X 8 PILE BEYOND TRIM / PAINTED
- 2 X 8 RE-DRIED PT UNDERPINNING WITH 1 1/2" SPACING BETWEEN BOARDS (PAINTED)
- T.O. SLAB(ground floor) (0'-0') 4.10' AMSL

MAX ROOF HT. (35'-0")

ROOF HT. (ground - ridge) (34'-0 1/2")

WIN HT. (8'-0")

WIN HT. (8'-0")

WIN HT. (6'-8")

WIN HT. (7'-0")

WIN HT. (7'-0")

WIN HT. (6'-8")

34'-3 1/2" FROM LOW VIRGIN POINT OF 5.47' ABOVE SEA LEVEL TO MAX RIDGE HEIGHT

LOW VIRGIN POINT 4.0' AMSL

2 X 8 RE-DRIED PT UNDERPINNING WITH 1 1/2" SPACING BETWEEN BOARDS (PAINTED)

8 X 8 NEWELL POST WITH 1x FIBER CEMENT TRIM AND CAP (PAINTED)

BAND BOARD 5/4 X 12 FIBER CEMENT OVER 1 X 6 WITH 5/4 FC DRIP CAP AND FLASHING (PAINTED)
CUSTOM SWING GARAGE DOORS (SITE/SHOP BUILT)

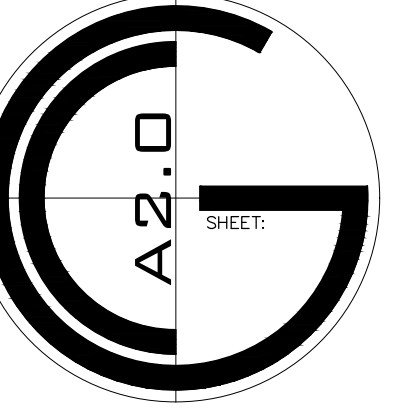
2 X 8 RE-DRIED PT UNDERPINNING WITH 1 1/2" SPACING BETWEEN BOARDS (PAINTED)

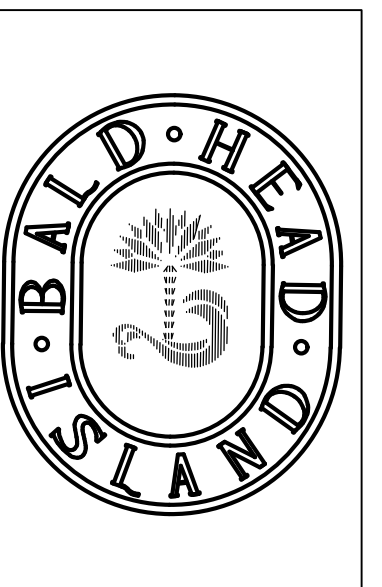
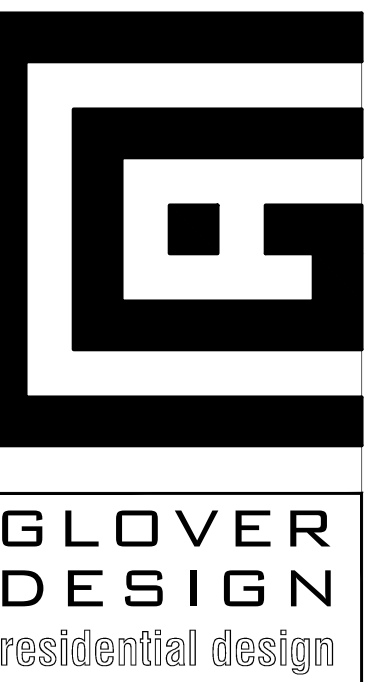
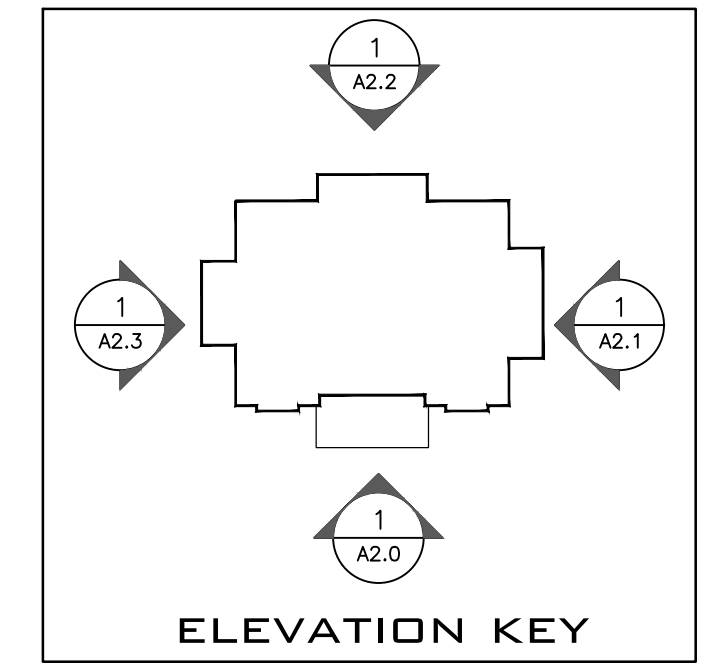
5/4 X 6 MASSARANDUBA DECKING

1 X 8 FIBER CEMENT RISER BOARD (PAINTED)

2 X 8 RE-DRIED PT UNDERPINNING WITH 1 1/2" SPACING BETWEEN BOARDS (PAINTED)

1/A2.0 ELEVATION : front
1/4" = 1'-0"





ANY STRUCTURAL COMPONENTS ARE SHOWN FOR REFERENCE ONLY. CONTRACTOR TO INSTALL COMPONENTS TO MEET NC RESIDENTIAL BUILDING CODE.

MINOR REVISIONS
2 / 26 / 2024

REVISIONS
6 / 19 / 2023

THESE DRAWINGS ARE THE PROPERTY OF GLOVER DESIGN LLC. UNAUTHORIZED USE IS PROHIBITED. COPYRIGHT 2023

PROJECT: 225 WBHW
225 WEST BALD HEAD WYND
BALD HEAD ISLAND, NC : 28461

SHEET TITLE: ELEVATIONS : RIGHT SIDE

DATE: 19 JUNE 2023

PROJECT NO.:

ISSUED BY: KCG



HANDRAIL
1.5" x 1.5" ALUMINUM NEWELL POST WITH .5" X 1.5" TOP CAP WITH HOLES DRILLED TO RECEIVE 2 x 4 IPE CAP. 1/2" Ø ALUMINUM ROD @ 4" oc. (POWDER COATED)
(PROVIDE SHOP DRAWINGS TO BUILDER FOR APPROVAL)

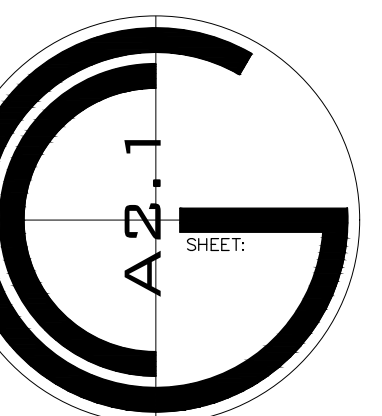
5/4 X 12 FIBER CEMENT TRIM SKIRT (PAINTED)

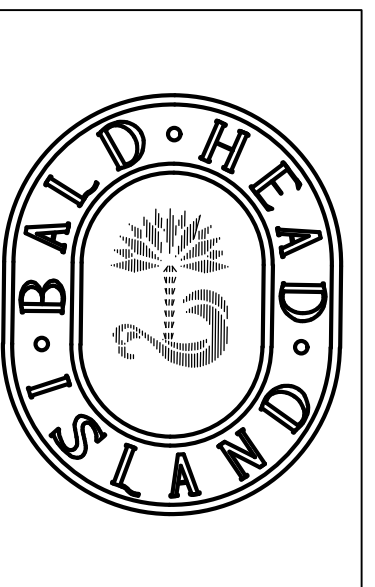
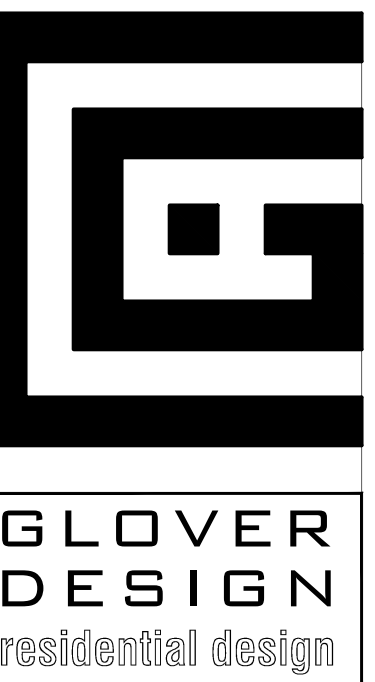
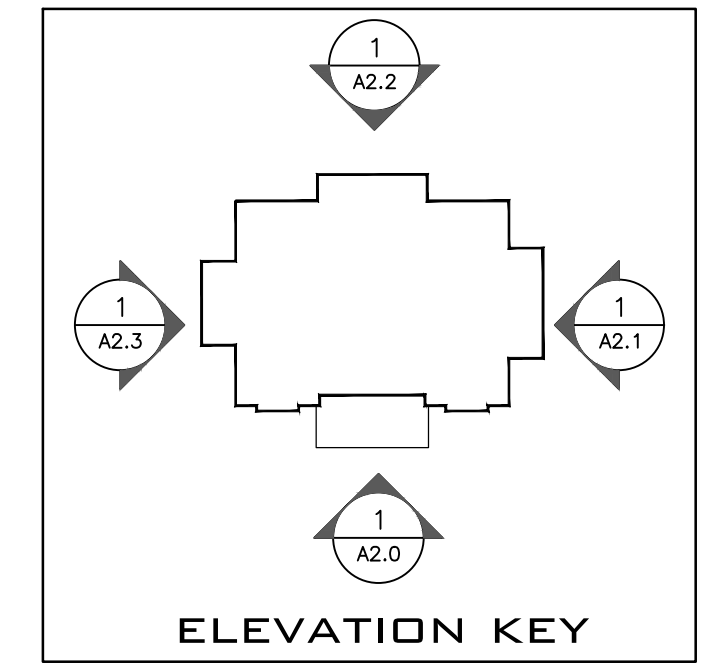
5/4 X 6 MASSARANDUBA DECKING

1 X 8 FIBER CEMENT RISER BOARD (PAINTED)

- LAP SIDING
FIBER CEMENT / 6" EXPOSURE / SMOOTH / PAINTED
- 5/4 X 4 FIBER CEMENT CORNER BOARD (PAINTED)
- T.O. PLATE (first floor)
(9'-1 1/2')
- STANDING SEAM METAL ROOF
(COLOR TBD)
- FASCIA
2 x 4 RE-DRIED PT WITH DRIP EDGE TO MATCH ROOFING (PAINTED)
- LAP SIDING
FIBER CEMENT / 6" EXPOSURE / SMOOTH / PAINTED
- T.O. SUBFLOOR(second floor)
(1'-4 3/4')
- T.O. PLATE (first floor)
(8'-1 1/2')
- 5/4 X 4 FIBER CEMENT CORNER BOARD (PAINTED)
- BAND BOARD
5/4 X 12 FIBER CEMENT OVER 1 X 6 WITH 5/4 FC DRIP CAP AND FLASHING (PAINTED)
- 5/4 X 12 FIBER CEMENT TRIM (PAINTED)
- T.O. SUBFLOOR(first floor)
(1'-4 3/4' / 13.5' AMSL)
- T.O. GIRDER (ground floor)
(8'-0" / 12.10' AMSL)
- AE 9 + 2 FREEBOARD
11.0' AMSL
- 8 X 8 PILE BEYOND TRIM / PAINTED
- 2 X 8 RE-DRIED PT UNDERPINNING WITH 1 1/2" SPACING BETWEEN BOARDS (PAINTED)
- T.O. SLAB(ground floor)
(0'-0") 4.10' AMSL
- RAINSCREEN DETAIL
LAYER 1 = FC SMOOTH PANELS
LAYER 2 = FC BATTENS @ 16" oc VERTICALLY
LAYER 3 = 1 X 8 FC or PVC TRIM WITH 1 1/2" SPACING BETWEEN BOARDS. ALIGN WITH SCREENING UNDER HOUSE. (PAINTED)

1/A2.1 ELEVATION : right side
1/4" = 1'-0"





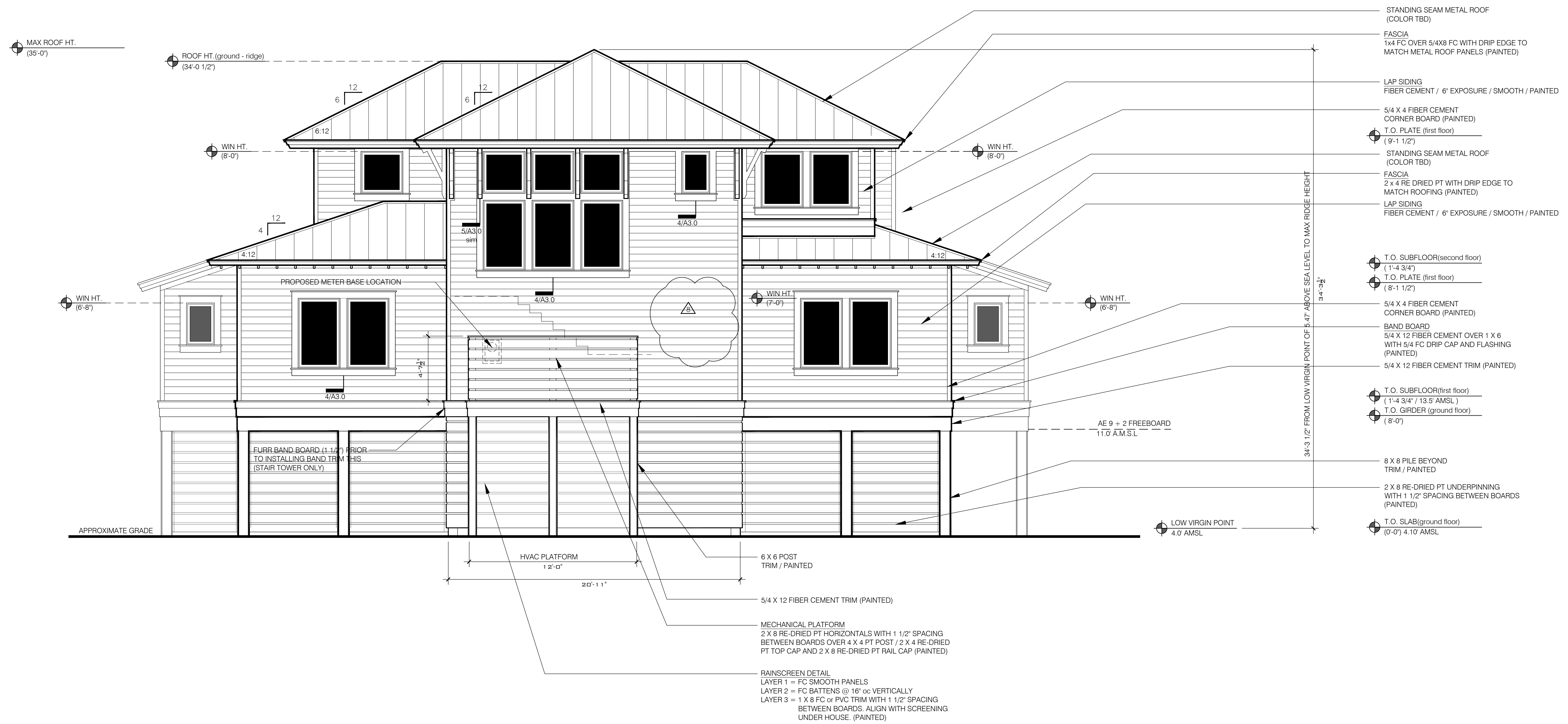
ANY STRUCTURAL COMPONENTS ARE SHOWN FOR REFERENCE ONLY. CONTRACTOR TO INSTALL COMPONENTS TO MEET NC RESIDENTIAL BUILDING CODE.

MINOR REVISIONS
2 / 26 / 2024

REVISIONS
6 / 19 / 2023

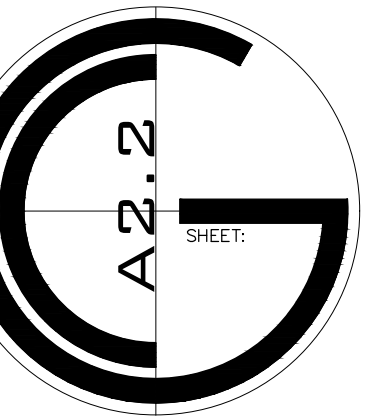
THESE DRAWINGS ARE THE PROPERTY OF GLOVER DESIGN, LLC. UNAUTHORIZED USE IS PROHIBITED. COPYRIGHT 2023

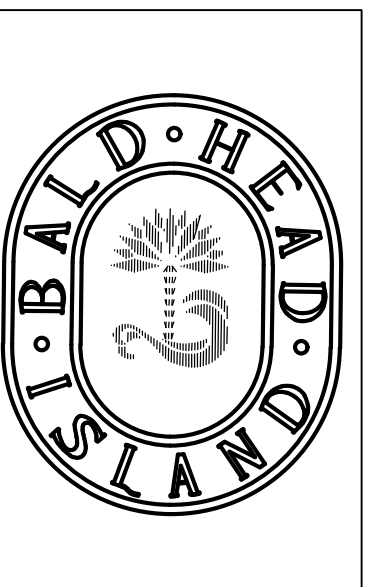
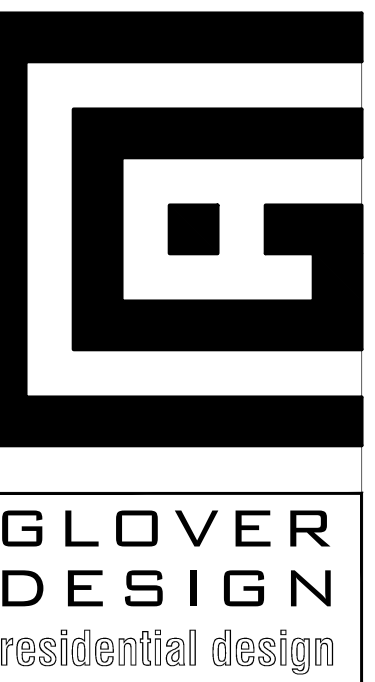
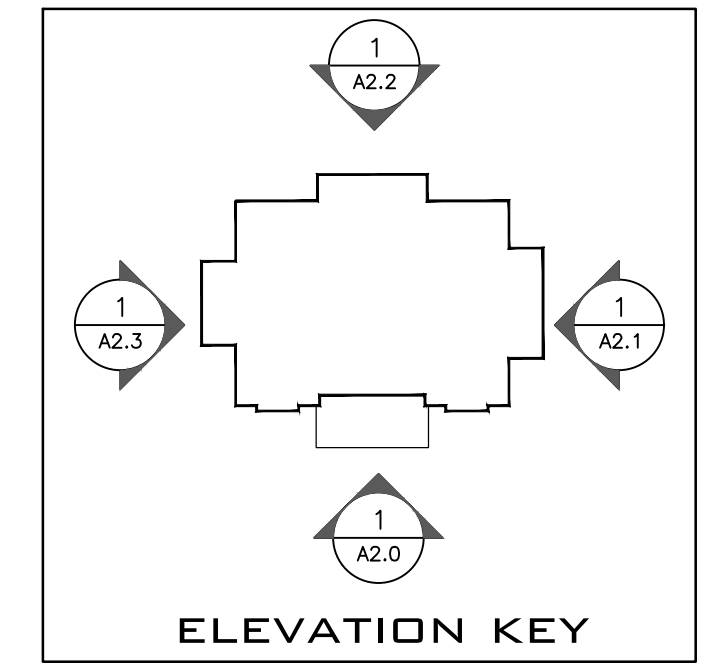
PROJECT:	225 WBHW
	225 WEST BALD HEAD WYND BALD HEAD ISLAND, NC . 28461
SHEET TITLE:	ELEVATIONS : REAR
DRAWN BY:	KCG
DATE:	19 JUNE 2023
PROJECT NO.:	



- STANDING SEAM METAL ROOF (COLOR TBD)
- FASCIA 1x4 FC OVER 5/4X8 FC WITH DRIP EDGE TO MATCH METAL ROOF PANELS (PAINTED)
- LAP SIDING FIBER CEMENT / 6' EXPOSURE / SMOOTH / PAINTED
- 5/4 X 4 FIBER CEMENT CORNER BOARD (PAINTED)
- T.O. PLATE (first floor) (9'-1 1/2')
- STANDING SEAM METAL ROOF (COLOR TBD)
- FASCIA 2x4 RE DRIED PT WITH DRIP EDGE TO MATCH ROOFING (PAINTED)
- LAP SIDING FIBER CEMENT / 6' EXPOSURE / SMOOTH / PAINTED
- T.O. SUBFLOOR(second floor) (1'-4 3/4')
- T.O. PLATE (first floor) (8'-1 1/2')
- 5/4 X 4 FIBER CEMENT CORNER BOARD (PAINTED)
- BAND BOARD 5/4 X 12 FIBER CEMENT OVER 1 X 6 WITH 5/4 FC DRIP CAP AND FLASHING (PAINTED)
- 5/4 X 12 FIBER CEMENT TRIM (PAINTED)
- T.O. SUBFLOOR(first floor) (1'-4 3/4' / 13.5' AMSL)
- T.O. GIRDER (ground floor) (8'-0')
- 8 X 8 PILE BEYOND TRIM / PAINTED
- 2 X 8 RE-DRIED PT UNDERPINNING WITH 1 1/2" SPACING BETWEEN BOARDS (PAINTED)
- T.O. SLAB(ground floor) (0'-0") 4.10' AMSL

1/A2.2 ELEVATION : rear
1/4" = 1'-0"





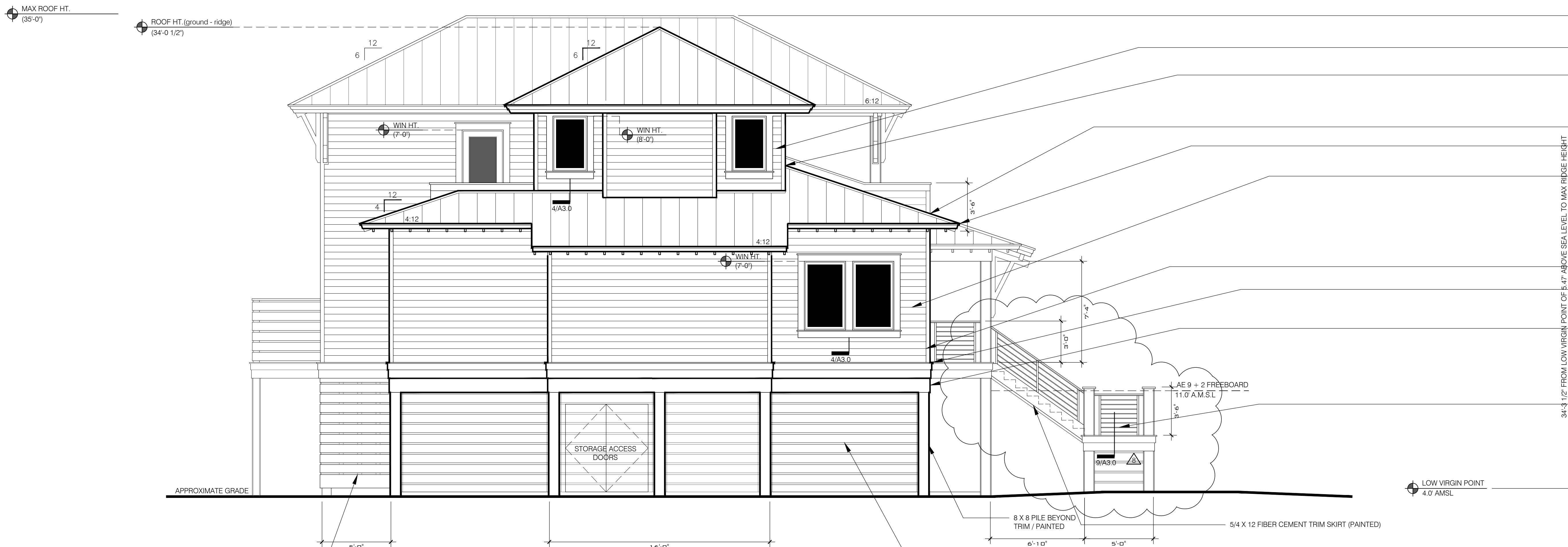
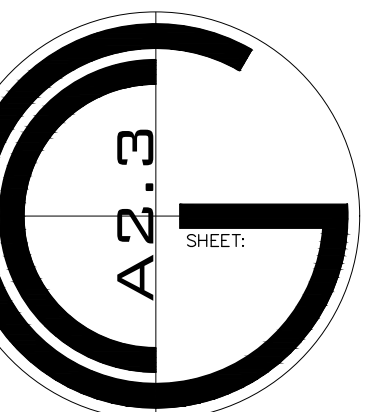
ANY STRUCTURAL COMPONENTS ARE SHOWN FOR REFERENCE ONLY. CONTRACTOR TO INSTALL COMPONENTS TO MEET NC RESIDENTIAL BUILDING CODE.

MINOR REVISIONS
2 / 26 / 2024

REVISIONS
6 / 19 / 2023

THESE DRAWINGS ARE THE PROPERTY OF GLOVER DESIGN LLC. UNAUTHORIZED USE IS PROHIBITED. COPYRIGHT 2023

PROJECT	225 WBHW
	225 WEST BALD HEAD WYND
	BALD HEAD ISLAND . NC . 28461
SHEET TITLE	ELEVATION : LEFT SIDE
DRAWN BY	KCG
DATE	19 JUNE 2023
PROJECT NO.	



- LAP SIDING
FIBER CEMENT / 6' EXPOSURE / SMOOTH / PAINTED
- 5/4 X 4 FIBER CEMENT
CORNER BOARD (PAINTED)
- T.O. PLATE (first floor)
(9'-1 1/2')
- STANDING SEAM METAL ROOF
(COLOR TBD)
- FASCIA
2 X 4 RE-DRIED PT WITH DRIP EDGE TO
MATCH ROOFING (PAINTED)
- LAP SIDING
FIBER CEMENT / 6' EXPOSURE / SMOOTH / PAINTED
- T.O. SUBFLOOR(second floor)
(1'-4 3/4')
- T.O. PLATE (first floor)
(8'-1 1/2')
- 5/4 X 4 FIBER CEMENT
CORNER BOARD (PAINTED)
- BAND BOARD
5/4 X 12 FIBER CEMENT OVER 1 X 6
WITH 5/4 FC DRIP CAP AND FLASHING
(PAINTED)
- 5/4 X 12 FIBER CEMENT TRIM (PAINTED)
- T.O. SUBFLOOR(first floor)
(1'-4 3/4' / 13.5' AMSL)
- T.O. GIRDER (ground floor)
(8'-0' / 12.10' AMSL)
- HANDRAIL
1.5" X 1.5" ALUMINUM NEWELL POST WITH .5" X 1.5"
TOP CAP WITH HOLES DRILLED TO RECEIVE
2 X 4 IPE CAP, 1/2" Ø ALUMINUM ROD
(@ 4' oc. (POWDER COATED)
(PROVIDE SHOP DRAWINGS TO BUILDER
FOR APPROVAL)
- T.O. SLAB(ground floor)
(0'-0' / 4.10' AMSL)

RAINSCREEN DETAIL
LAYER 1 = FC SMOOTH PANELS
LAYER 2 = FC BATTENS @ 16" oc VERTICALLY
LAYER 3 = 1 X 8 FC or PVC TRIM WITH 1 1/2" SPACING
BETWEEN BOARDS. ALIGN WITH SCREENING
UNDER HOUSE. (PAINTED)

1/A2.3 ELEVATION : left side
1/4" = 1'-0"